

Ronco High Security Solution for Responder 5 Nurse Call System

High Security Key Lock Station R5KLS-4



The Key Lock Station (R5KLS-4) is a flush-mounted unit for use in psychiatric wards and other high security hospital areas. It is generally positioned outside the entrance to a room or ward and is used to activate a dry contact pushbutton located in the room. The R5KLS has four separate inputs and outputs and can accommodate up to four separate call priorities from a room. All call placed via the R5KLS-4 must be cancelled at the R5KLS-4. A built-in “LED” indicator will illuminate when the key is to the “on” position, activating the R5KL. When a call is placed, a second built-in “LED” will illuminate at the key lock station. The call will be placed through the Responder 5 system, annunciating the call on the nurse call console and the call systems associated equipment. The call is terminated when the staff cancels the call from the R5KLS-4 station by turning the key lock to the “off” position.

The R5KLS-4 is built on a .050” stainless steel plate and incorporates circuitry for continuously reliable operation and requires a separate 15VDC power supply, not included. See typical installation drawings for details.

Dimensions: standard single gang plate: 2.75”W x 4.5”H x 1.5” D

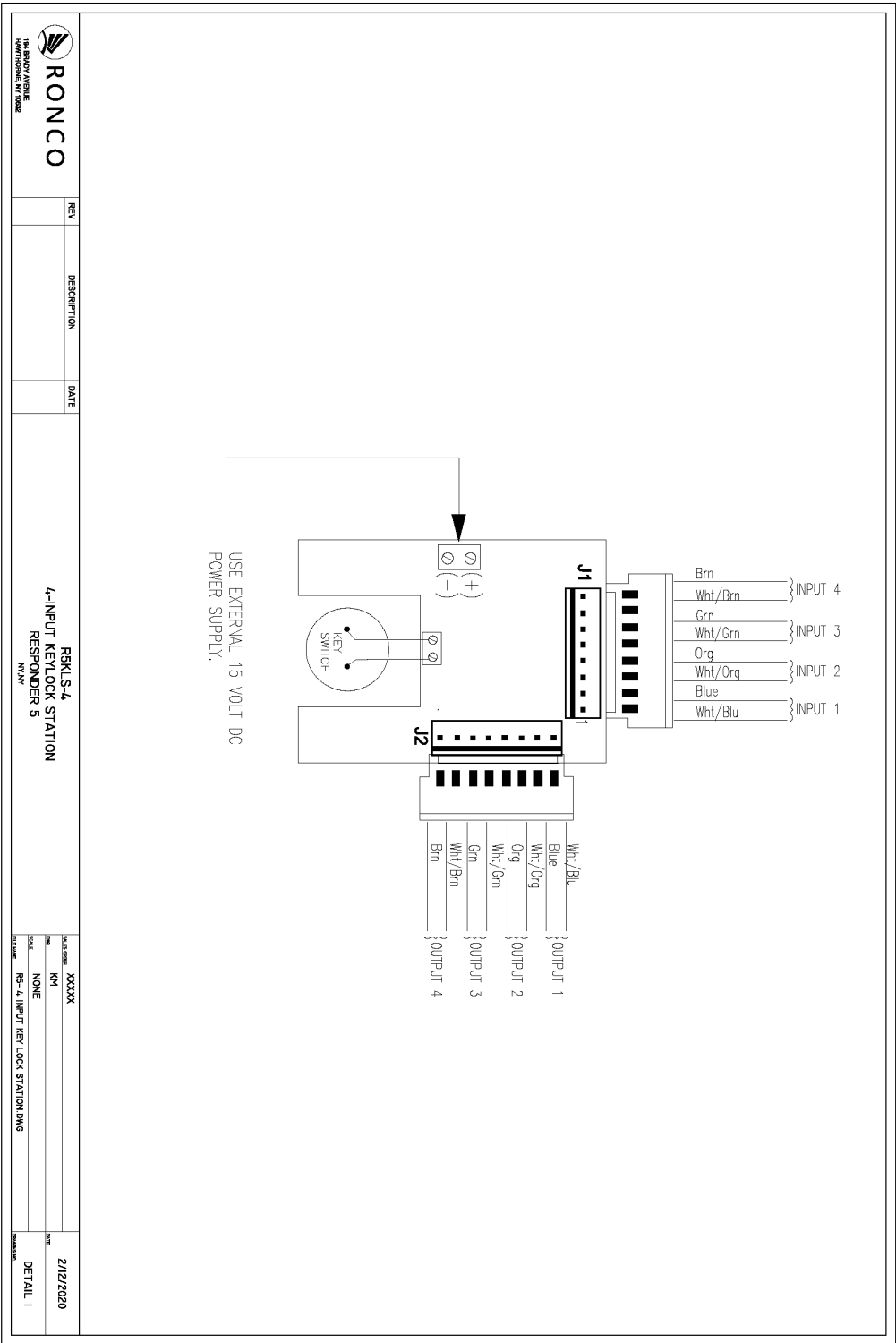
Voltage Requirements: 12- 15.5 VDC, 50 ma all four outputs active

Current Draw @ 15VDC: 10 MA on/standby, 50 MA all four outputs active.

Back Box: fits standard single gang electrical box and single gang cut-in box.

R5KLS-4 input works with dry contact closures only and used with R5HSSCP-1 and R5WPPB.

Ronco High Security Solution for Responder 5 Nurse Call System



[illegible]

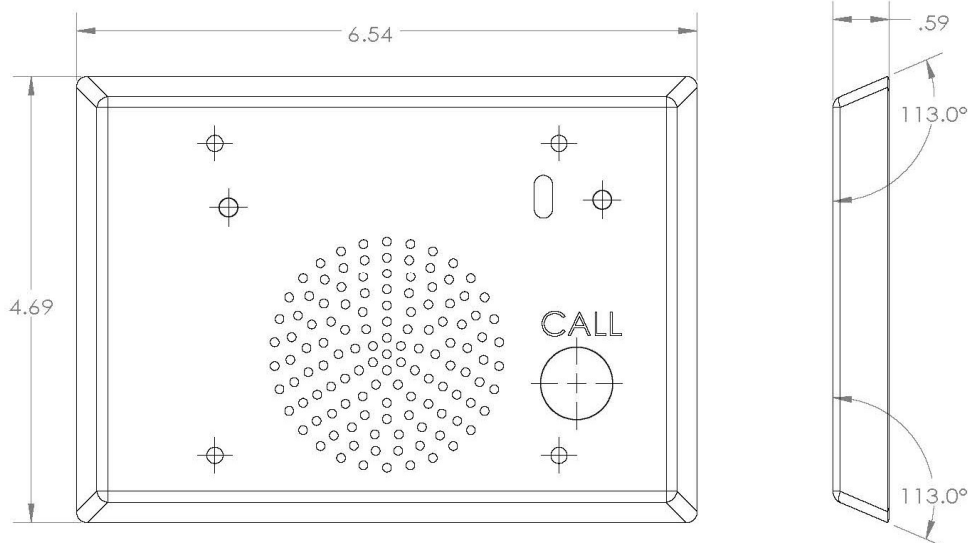
Ronco High Security Solution for Responder 5 Nurse Call System

High Security Staff Station Cover Plate R5HSSCP-1



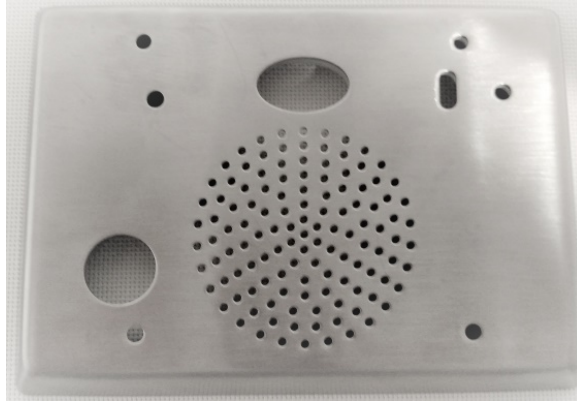
The High Security Steel Cover Plate (R5HSSCP-1) is a 3 gang, .050", stainless steel plate, designed to protect the R5 Staff Station (353101) when used in psychiatric wards and other high security hospital areas. The plate incorporates a vandal resistant dry contact switch which is used in conjunction with the R5KLS and is used to initiate a call from the room. When using the R5HSSCP-1, the R5 Staff Station plastic cover plate is not installed.

Dimensions: 6.54"W x 4.69"H



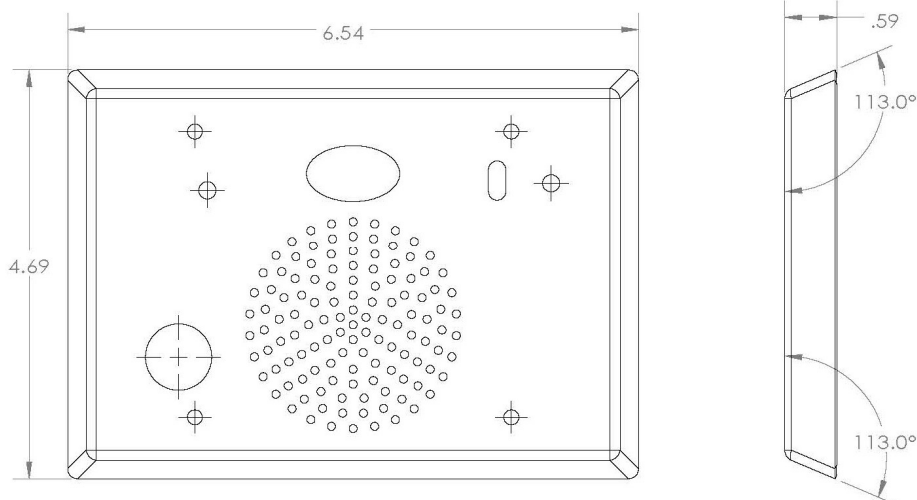
Ronco High Security Solution for Responder 5 Nurse Call System

High Security Push Button Cover Plate R5HSSCP-2



The High Security Steel Cover Plate (R5HSSCP-2) is a 3 gang, .050", stainless steel plate, designed to protect the R5 Staff Station when used in psychiatric wards and other high security hospital areas. The R5HSSCP-2 allows access to, and operation of, the station's call and cancel switches. The R5 Staff Station plastic cover plate is used with the R5HSSCP-2 and must have pass-through holes drilled for the four mounting screws. The R5KLS-4 is not used with this plate configuration.

Dimensions: 6.54"W x 4.69"H

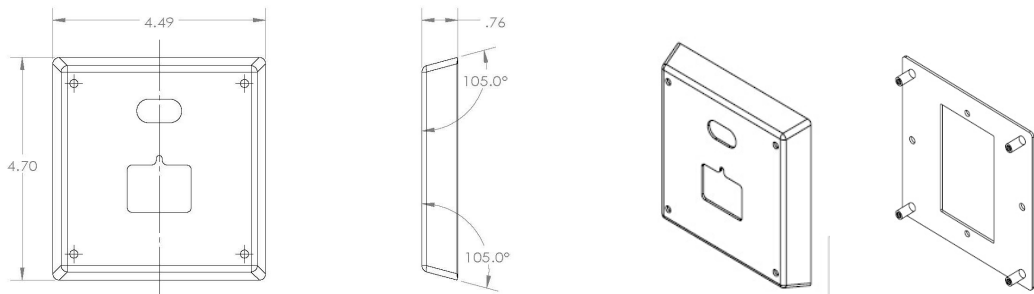


Ronco High Security Solution for Responder 5 Nurse Call System

High Security Push Button Cover Plate R5HSPBP



The High Security Push Button Cover Plate (R5HSPBCP) is a .050", stainless steel plate, designed to protect Rauland R5 Code (354011) and Staff Assist Station (354012) when used in psychiatric wards and other high security hospital areas. The plate installs over the push button stations without drilling or modification to the station. This plate is NOT USED with the R5KLS-4.



Dimensions: Cover Plate: 4.49"W x 4.70"H
Back Plate: 4.25"W x 4.25"H

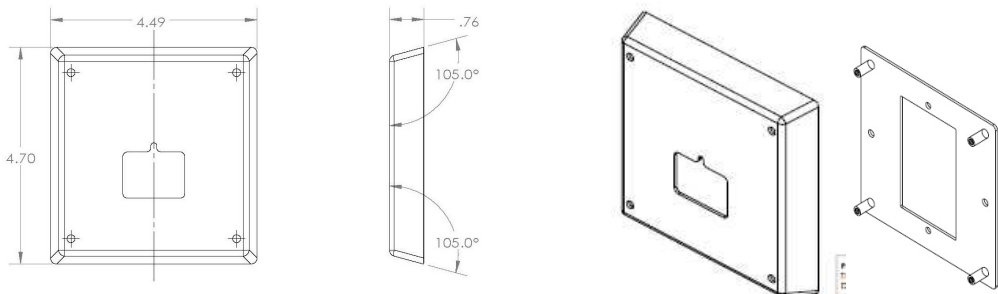
Back Box: single masonry style (will not fit ganged cut-in box), 2 ½ deep

Ronco High Security Solution for Responder 5 Nurse Call System

High Security Cancel Station Cover Plate R5HSCSCP



The High Security Cancel Station Cover Plate (R5HSCSCP) is a .050", stainless steel plate, designed to protect Rauland R5 Cancel Station (354010) when used in psychiatric wards and other high security hospital areas. The plate installs over the station without drilling or modification to the station. This plate is NOT USED with the R5KLS-4.



Dimensions: Cover Plate: 4.49"W x 4.70"H

Back Plate: 4.25"W x 4.25"H

Back Box: single gang masonry style (will not fit ganged cut-in box), 2 ½ deep

R5WPPB Vandal Proof/Water Resistant Call Switch



Vandal Proof/water resistant call switch is use in shower areas and wet locations that require a vandal proof switch. The switch housing and actuator are made of a high-quality stainless steel and is particularly suitable for use in harsh environments. Switch meets IP protection class IEC/DIN/EN/60529 (IP67). The switch is mounted on a stainless steel face plate and requires a one gang (Gangable or Non-gangable), 2 1/2" Deep back box. When installing, locate the switch away from direct water spray.